

## WP4 guide de Mise à jour


Vidéo de mise à jour: <http://url.cn/Qsf9an>

### 1. Cable de Mise à jour:

Voir ci-dessous

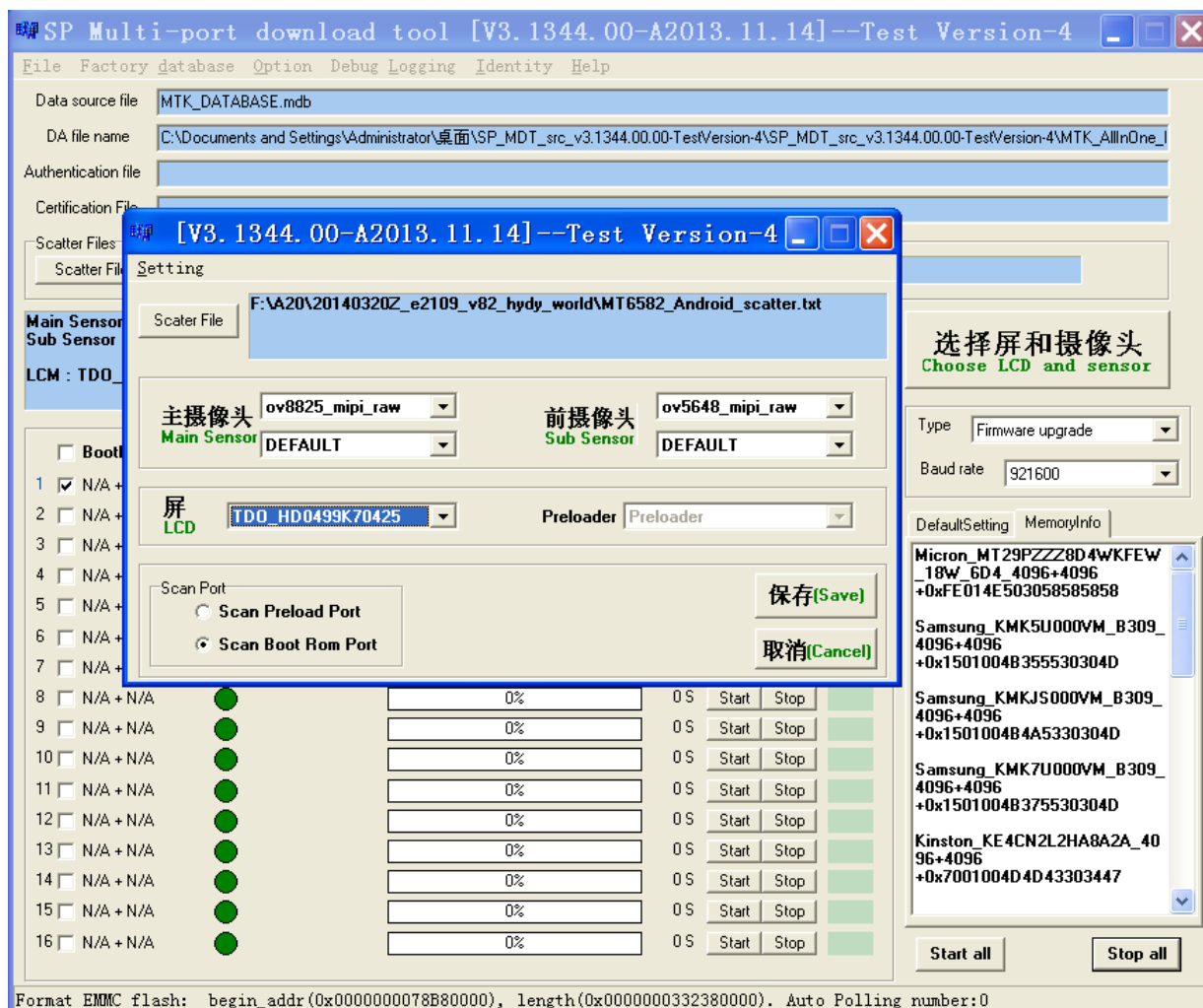


### 2. Outil de Mise à jour:

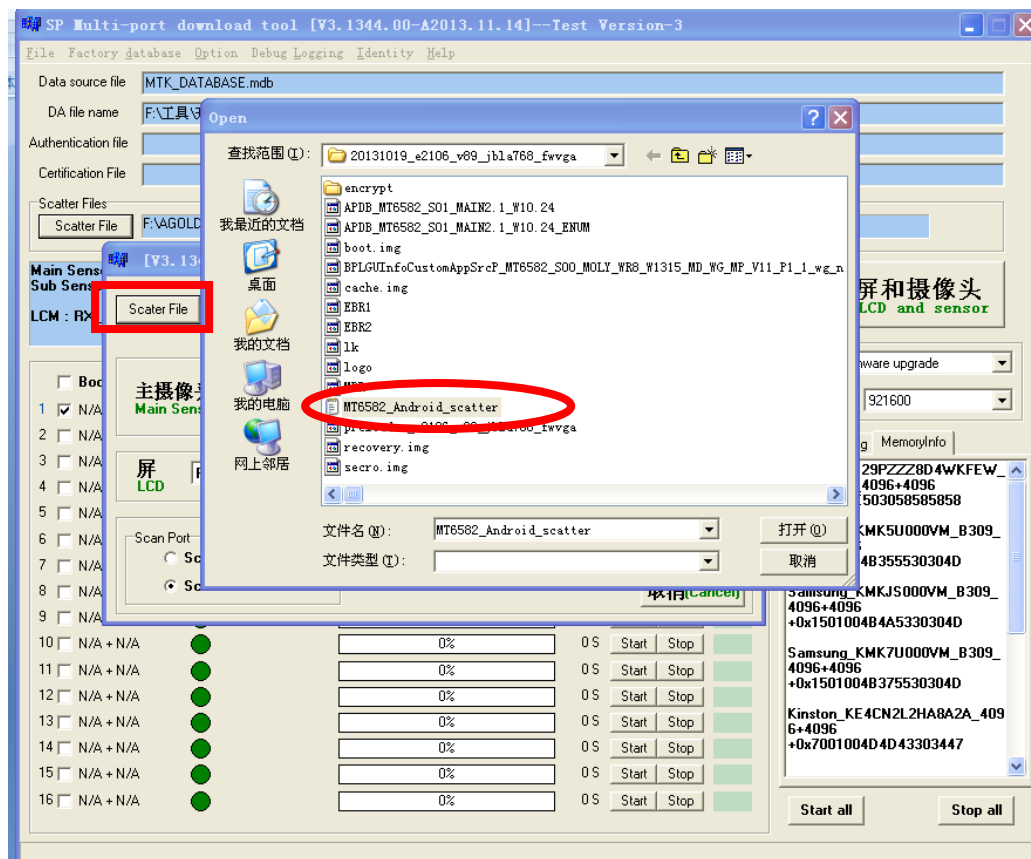
 SP\_MDT\_src\_v3.1344.00.00-TestVersion-4.rar

Décompresser l'outil

- 1) Cliquez sur l'icône "SPMultiPortFlashDownloadProject.exe" , s'affichera alors ce qui suit ci-dessous



2) Sélectionnez le fichier: cliquez "Scatter File" (voir ci-dessous) .



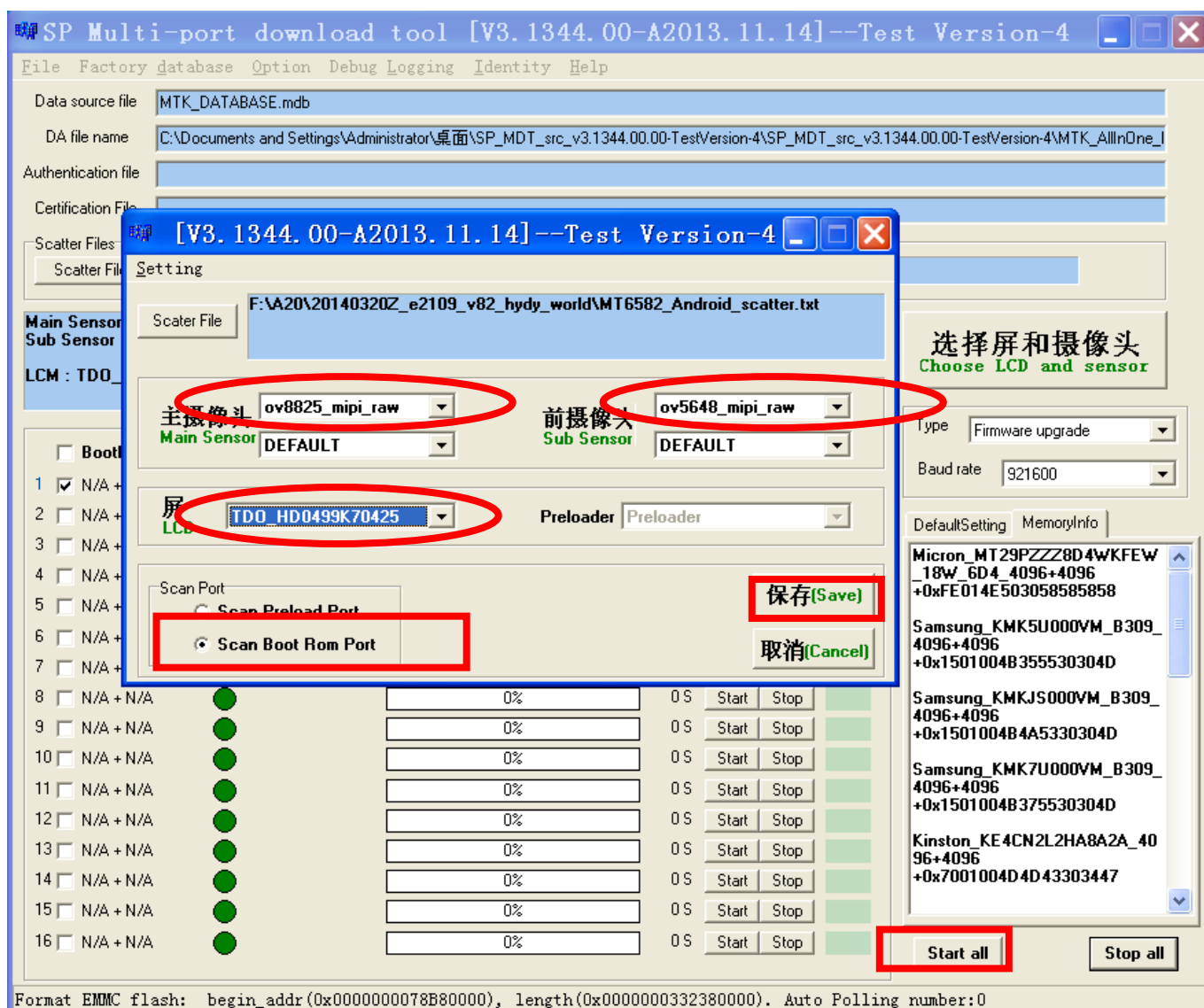
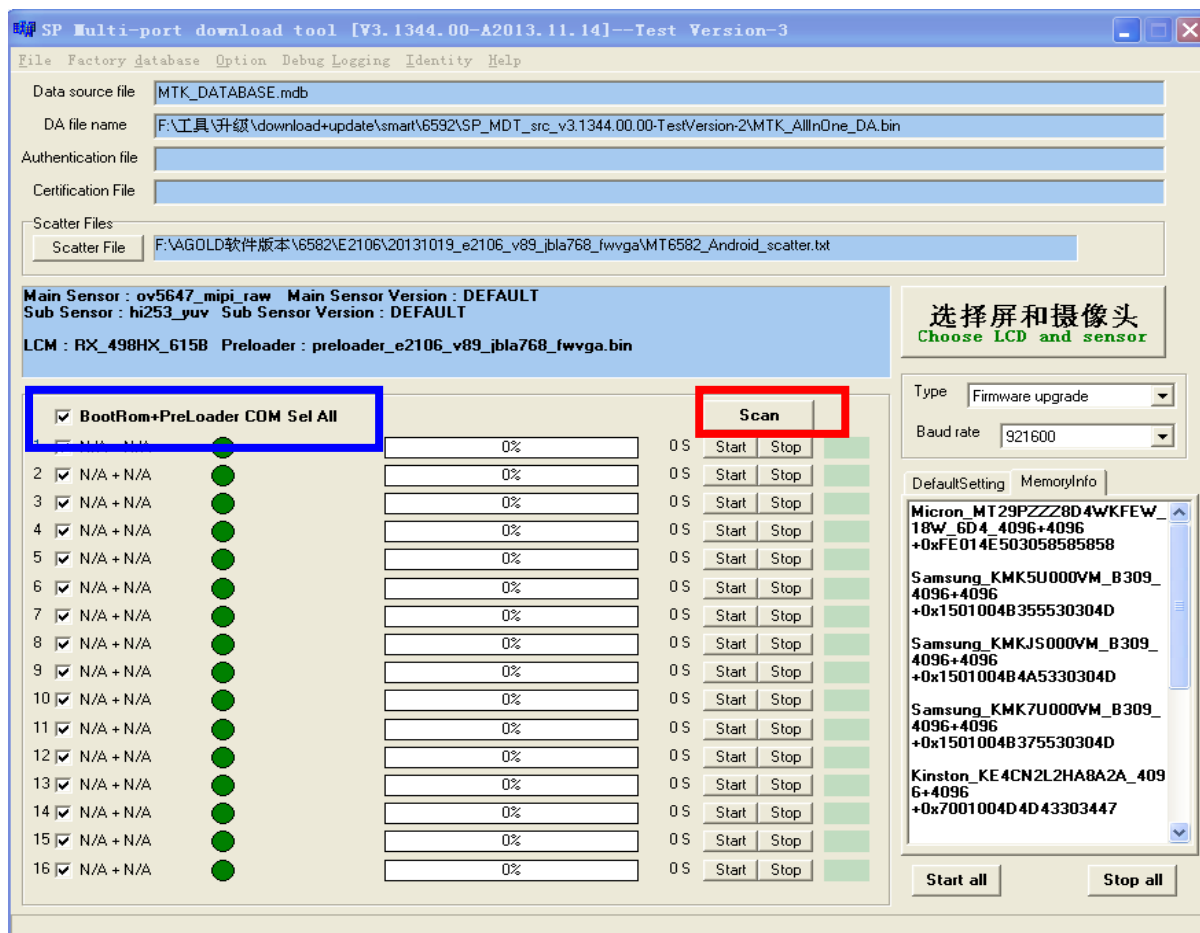
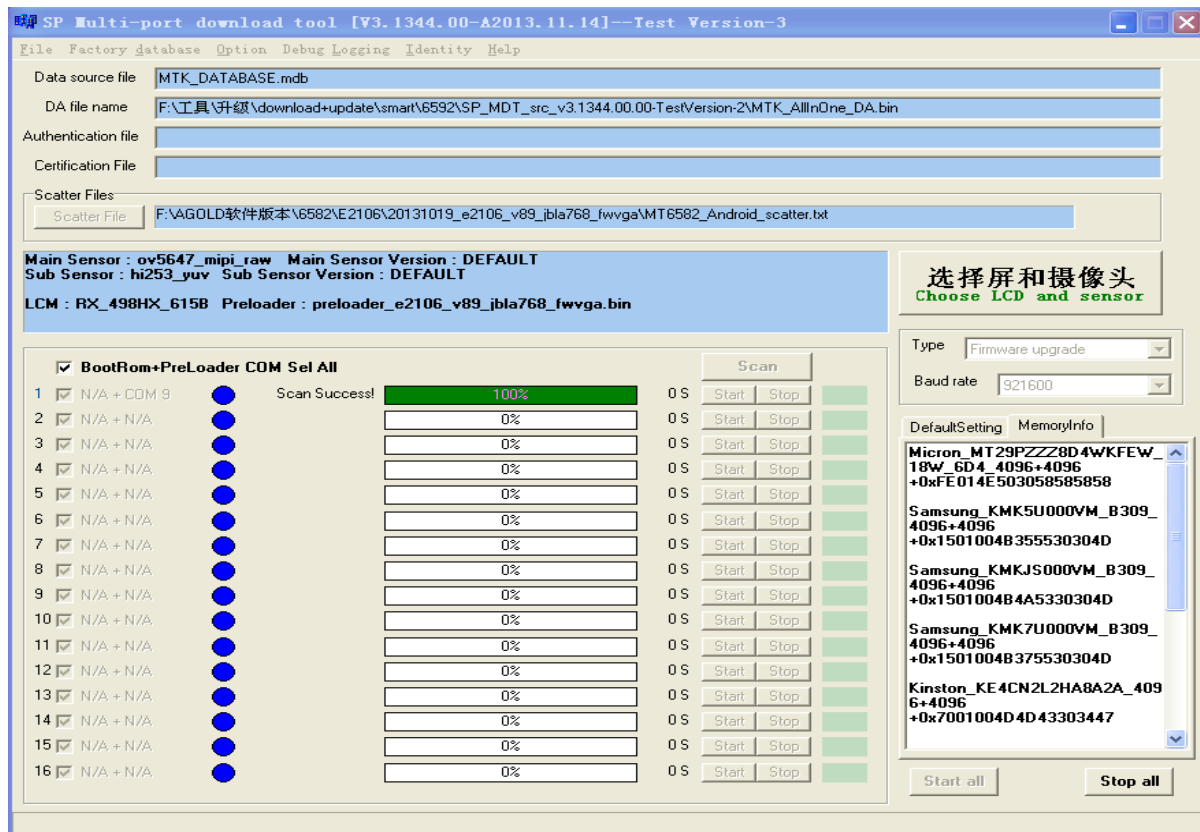


图3 (choose driver)

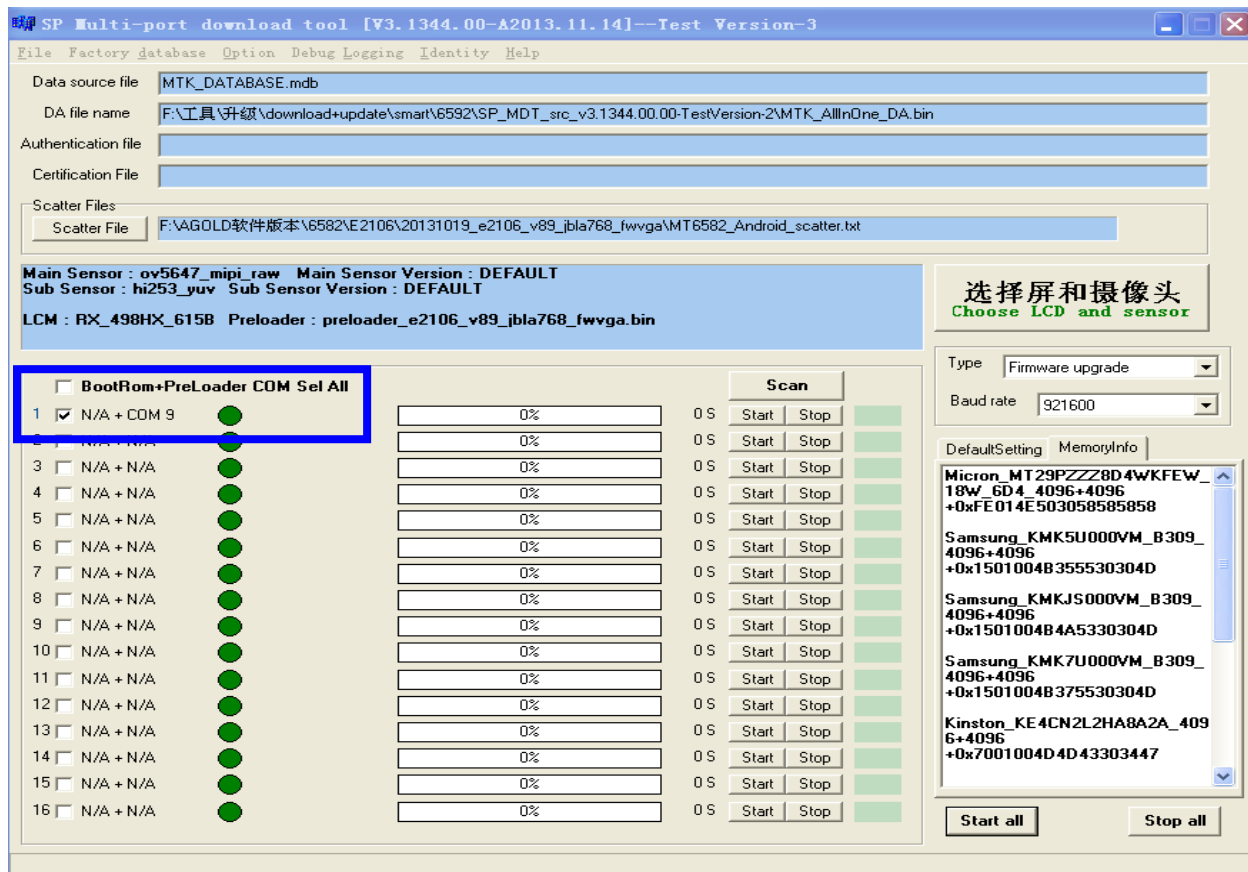
- 3) Après avoir choisi le driver, cliquez sur "Save", et ensuite sur "Start all", en connectant le téléphone pour débuter la mise à jour.



(Scan the com port)



(finished scan)



(click the available com port)

Dès que cette étape est finie, retirez la batterie, déconnectez le câble USB puis cliquez sur “start all”, remettez la batterie et connectez à nouveau le câble USB

SP Multi-port download tool [V3.1344.00-A2013.11.14]--Test Version-3

File Factory database Option Debug Logging Identity Help

Data source file: MTK\_DATABASE.mdb

DA file name: F:\工具\升级\download+update\smart\6592\SP\_MDT\_src\_v3.1344.00.00-TestVersion-2\MTK\_AllInOne\_DA.bin

Authentication file:

Certification File:

Scatter Files:

Scatter File: F:\AGOLD软件版本\6582\E2106\20131019\_e2106\_v89\_ibla768\_fwvga\MT6582\_Android\_scatter.txt

Main Sensor: ov5647\_mipi\_raw Main Sensor Version: DEFAULT  
Sub Sensor: hi253\_yuv Sub Sensor Version: DEFAULT

LCM: RX\_498HX\_615B Preloader: preloader\_e2106\_v89\_ibla768\_fwvga.bin

选择屏和摄像头  
Choose LCD and sensor

Type: Firmware upgrade  
Baud rate: 921600

DefaultSetting MemoryInfo

CURRENT  
MEM:0x45010053454D303847  
SANDISK\_SD5D28B\_8G\_4096+4096  
Micron\_MT29PZZZ8D4WKFEW\_18W\_6D4\_4096+4096  
+0xFE014E503058585858  
Samsung\_KMK5U000VM\_B309\_4096+4096  
+0x1501004B355530304D  
Samsung\_KMKJ5000VM\_B309\_4096+4096  
+0x1501004B4A5330304D  
Samsung\_KMK7U000VM\_B309\_4096+4096  
+0x1501004B375530304D

Start all Stop all

Format EMMC flash: begin\_addr (0x0000000078B80000), length (0x000000015FBA0000). Auto Polling number:0

BootRom+PreLoader COM Sel All				Scan
1	<input checked="" type="checkbox"/> N/A + COM 9	DL	20%	33 S Start Stop
2	<input type="checkbox"/> N/A + N/A		0%	0 S Start Stop
3	<input type="checkbox"/> N/A + N/A		0%	0 S Start Stop
4	<input type="checkbox"/> N/A + N/A		0%	0 S Start Stop
5	<input type="checkbox"/> N/A + N/A		0%	0 S Start Stop
6	<input type="checkbox"/> N/A + N/A		0%	0 S Start Stop
7	<input type="checkbox"/> N/A + N/A		0%	0 S Start Stop
8	<input type="checkbox"/> N/A + N/A		0%	0 S Start Stop
9	<input type="checkbox"/> N/A + N/A		0%	0 S Start Stop
10	<input type="checkbox"/> N/A + N/A		0%	0 S Start Stop
11	<input type="checkbox"/> N/A + N/A		0%	0 S Start Stop
12	<input type="checkbox"/> N/A + N/A		0%	0 S Start Stop
13	<input type="checkbox"/> N/A + N/A		0%	0 S Start Stop
14	<input type="checkbox"/> N/A + N/A		0%	0 S Start Stop
15	<input type="checkbox"/> N/A + N/A		0%	0 S Start Stop
16	<input type="checkbox"/> N/A + N/A		0%	0 S Start Stop

(downloading)

SP Multi-port download tool [V3.1344.00-A2013.11.14]--Test Version-3

File Factory database Option Debug Logging Identity Help

Data source file: MTK\_DATABASE.mdb

DA file name: F:\工具\升级\download+update\smart\6592\SP\_MDT\_src\_v3.1344.00.00-TestVersion-2\MTK\_AllInOne\_DA.bin

Authentication file:

Certification File:

Scatter Files:

Scatter File: F:\AGOLD软件版本\6582\E2106\20131019\_e2106\_v89\_ibla768\_fwvga\MT6582\_Android\_scatter.txt

Main Sensor: ov5647\_mipi\_raw Main Sensor Version: DEFAULT  
Sub Sensor: hi253\_yuv Sub Sensor Version: DEFAULT

LCM: RX\_498HX\_615B Preloader: preloader\_e2106\_v89\_ibla768\_fwvga.bin

选择屏和摄像头  
Choose LCD and sensor

Type: Firmware upgrade  
Baud rate: 921600

DefaultSetting MemoryInfo

CURRENT  
MEM:0x45010053454D303847  
SANDISK\_SD5D28B\_8G\_4096+4096  
Micron\_MT29PZZZ8D4WKFEW\_18W\_6D4\_4096+4096  
+0xFE014E503058585858  
Samsung\_KMK5U000VM\_B309\_4096+4096  
+0x1501004B355530304D  
Samsung\_KMKJ5000VM\_B309\_4096+4096  
+0x1501004B4A5330304D  
Samsung\_KMK7U000VM\_B309\_4096+4096  
+0x1501004B375530304D

Start all Stop all

Format EMMC flash: begin\_addr (0x0000000078B80000), length (0x000000015FBA0000). Auto Polling number:0

BootRom+PreLoader COM Sel All				Scan
1	<input checked="" type="checkbox"/> N/A + COM 9	DL OK	100%	129 S Start Stop A
2	<input type="checkbox"/> N/A + N/A		0%	0 S Start Stop
3	<input type="checkbox"/> N/A + N/A		0%	0 S Start Stop
4	<input type="checkbox"/> N/A + N/A		0%	0 S Start Stop
5	<input type="checkbox"/> N/A + N/A		0%	0 S Start Stop
6	<input type="checkbox"/> N/A + N/A		0%	0 S Start Stop
7	<input type="checkbox"/> N/A + N/A		0%	0 S Start Stop
8	<input type="checkbox"/> N/A + N/A		0%	0 S Start Stop
9	<input type="checkbox"/> N/A + N/A		0%	0 S Start Stop
10	<input type="checkbox"/> N/A + N/A		0%	0 S Start Stop
11	<input type="checkbox"/> N/A + N/A		0%	0 S Start Stop
12	<input type="checkbox"/> N/A + N/A		0%	0 S Start Stop
13	<input type="checkbox"/> N/A + N/A		0%	0 S Start Stop
14	<input type="checkbox"/> N/A + N/A		0%	0 S Start Stop
15	<input type="checkbox"/> N/A + N/A		0%	0 S Start Stop
16	<input type="checkbox"/> N/A + N/A		0%	0 S Start Stop